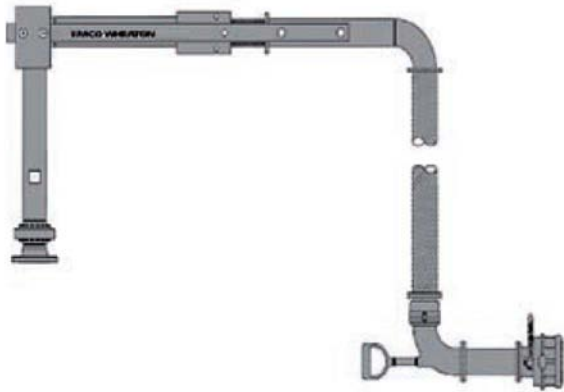


BOTTOM HOSE LOADING ARM WITH COUNTERWEIGHT BALANCE | E2573



5 year limited warranty on D2000 World Series swivel joints.

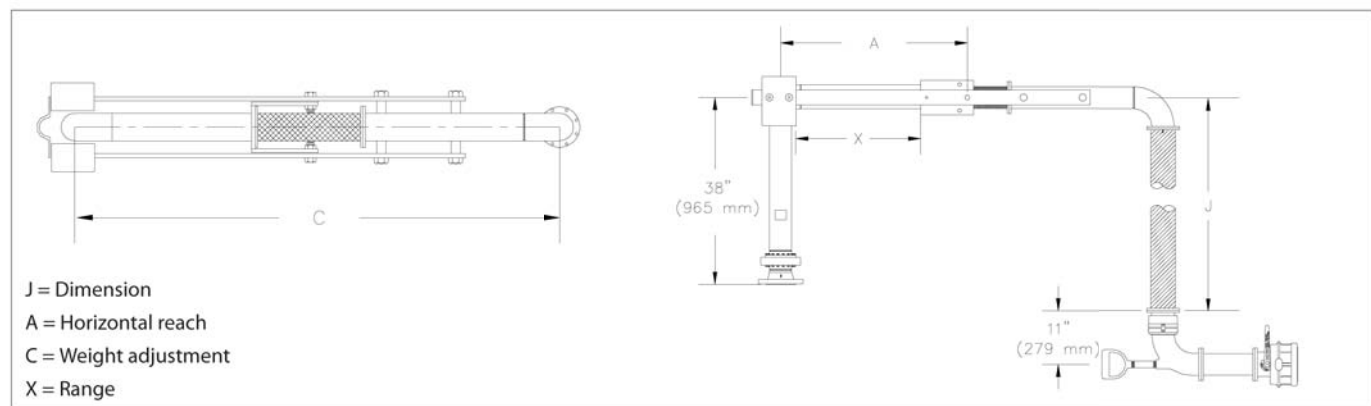
- ☞ Designed specifically for truck bottom loading petroleum terminal use
- ☞ 4" Carbon steel design with 150# inlet flange
- ☞ 4" TTMA hose connections
- ☞ Counterweight balancing for ease of handling and close center mounting to the API envelope
- ☞ D2000 World Series swivel joints with 5 year maintenance free limited warranty
- ☞ Recommended when crossover of three or more products is required
- ☞ Unique sliding scale weight allows arm to balance in the horizontal position
- ☞ Design allows for easy adjustment, greater coupling efficiency, and reduced installation time
- ☞ Complete package of arm, hose, hose cover, outboard swivel joint spacer spool, and API coupler available



Introducing the new K2 series API coupler, snap on/off action, with or without patented return pump or use the world's most popular API coupler, the J0451.

E2573

Dimensions and technical data

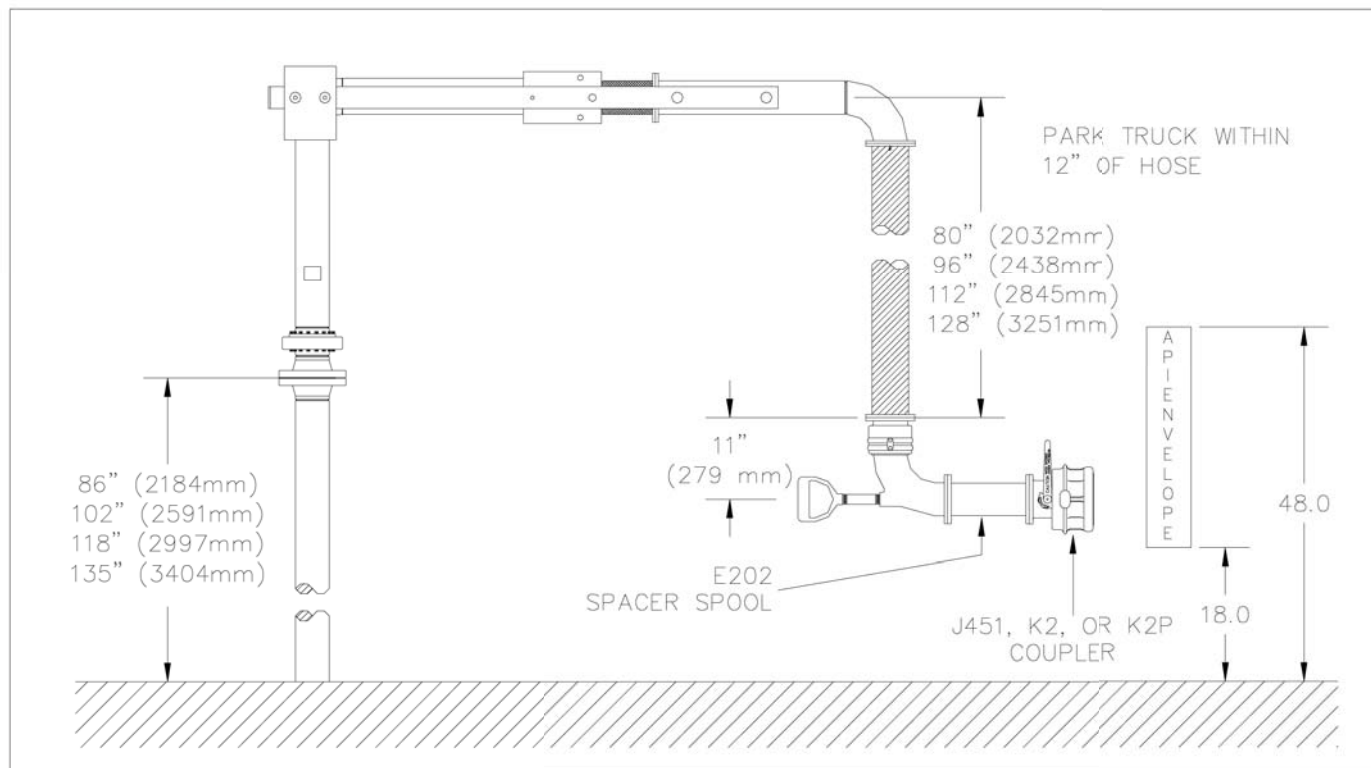


Dimensions

J	A	C	X
80"	38"	78"	24.2"
96"	45"	90"	31.2"
112"	45"	102"	31.2"
128"	57"	114"	43.2"

- Standard 114" reach covers the API RP-1004 envelope with up to 4 loaders on 18" centers
- Reaches of 78", 90" and 102" are available if required, but full coverage of the API envelope may require moving the vehicle
- Each successive loader should be 16" higher to allow for complete crossover
- Standard J dimensions are 80", 96", 112" and 128"

- Loading arms must be in horizontal position during crossover movement
- Arms can be sold separately or as a complete package with hose, hose cover, outboard swivel, spacer spool, and API coupler



EMCO WHEATON
 A Gardner Denver Product

EMCO WHEATON USA INC
 9111 Jackrabbit Road · Houston, Texas 77095 · USA
 Phone +1 281 856-1300 · Fax +1 281 856-1325
 www.emcowheaton.com · sales-us@emcowheaton.com

Better by
 DESIGN

Whilst the content of this leaflet has been edited with the greatest care, we are not liable for any errors and/or omissions. Subject to change without notice.