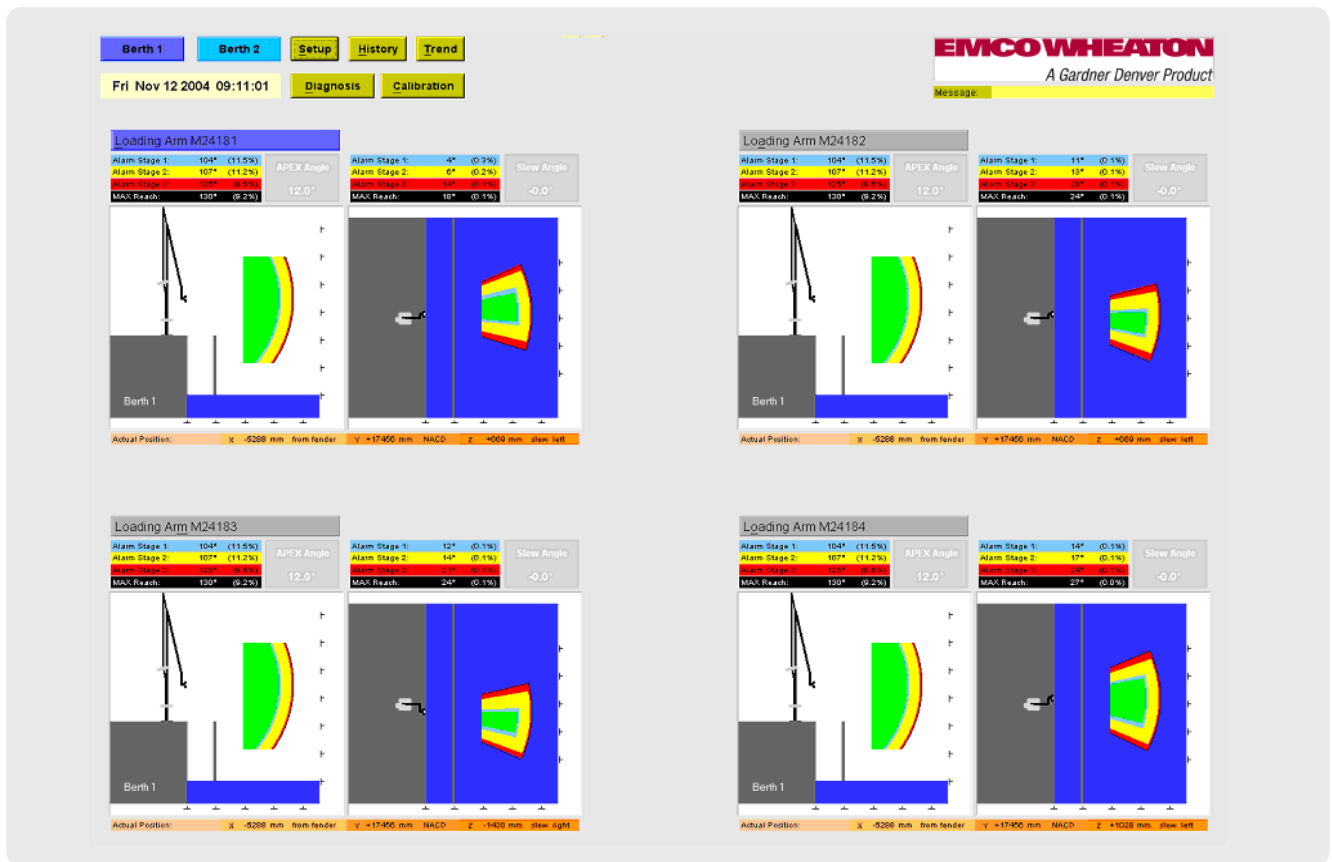


PMS | POSITION MONITORING SYSTEM



DESIGN FEATURES

- * A pendulum potentiometer located on the inboard arm to measure the angle of the inboard arm with respect to vertical
- * A pendulum potentiometer located on the outboard arm to measure the angle of the outboard arm with respect to vertical

- * A direct coupled potentiometer located at the base riser swivel joint to measure the slewing angle
- * The information from the potentiometers is relayed through a PC hooked to the local control panel

PMS

PMS | POSITION MONITORING SYSTEM

HARDWARE REQUIREMENTS

- * Pentium 4 - 1,6GHz; 1 free PCI-slot for the SIMATIC NET communication module

OPERATING SYSTEM

- * Windows® XP

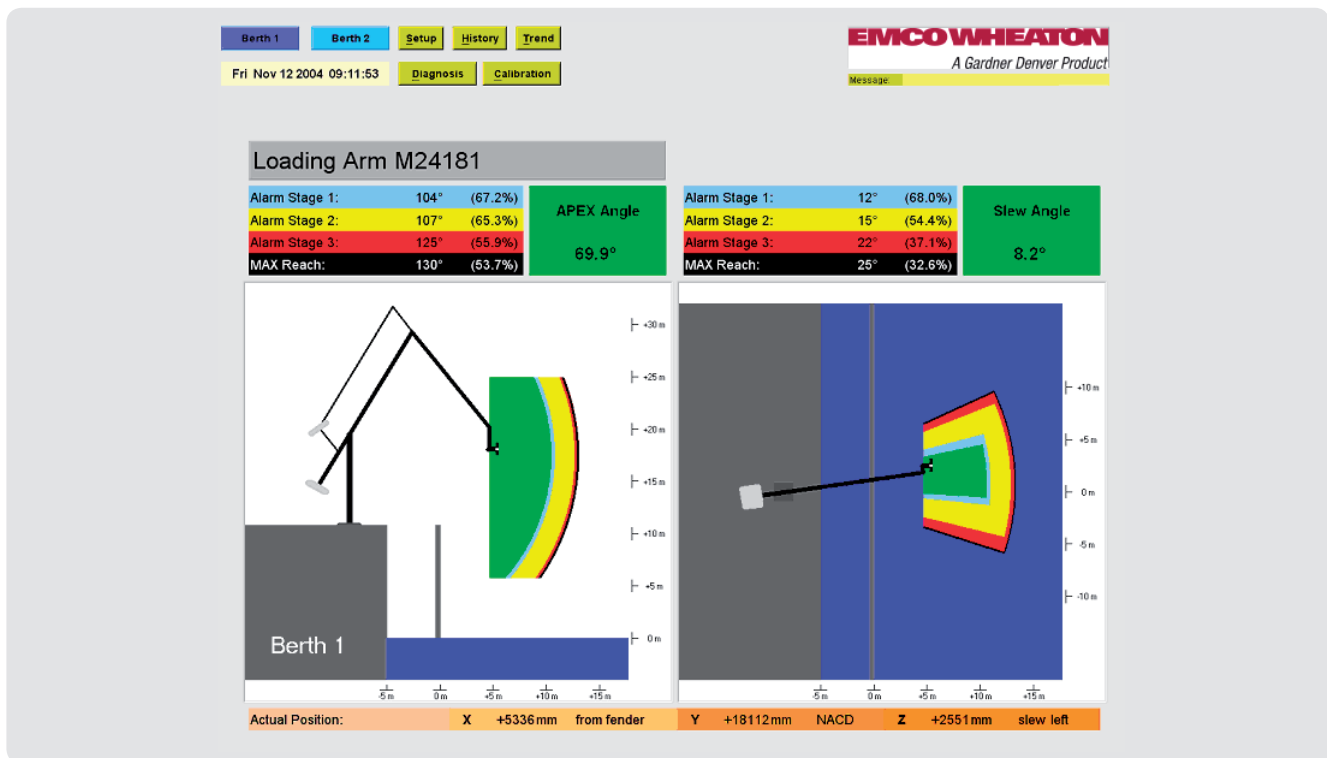
SOFTWARE FEATURES

- * Colored alarm ranges
- * Operator calibration mode
- * History and trend overlay
- * Daily history and event files
- * Angle sensor diagnostics
- * Scaled display of all loading arms in side view and top view
- * Multi Arm Display switching between the jetties
- * Display of one single loading arm (Single Arm Display)

- * Auto activating of Single Arm Display on alarm
- * Display of all loading arms installed on the jetty at the same time (Multi Arm Display)
- * Alarm Beep and flashing angle indicator on alarm
- * Display of percentage of actual position relative to the entire envelope
- * Display of actual position in x-, y- and z- axis
- * Saving of history and event data in CSV-format (Excel compatible)
- * Status indication of the angle sensor data transfer
- * Setup menus for the project configuration

OTHER FEATURES

- * Remote maintenance
- * Display redirection via TCP/IP or modem



Better by Design



EMCO WHEATON

A Gardner Denver Product

EMCO WHEATON GmbH
 Emcostraße 2-4 · 35274 Kirchhain · Germany
 Phone +49 6422 84-0 · Fax +49 6422 5100
 www.emcowheaton.com · info-de@emcowheaton.com

Whilst the content of this leaflet has been edited with the greatest care, we are not liable for any errors and/or omissions. Subject to change without notice.

PMS EN 05/08